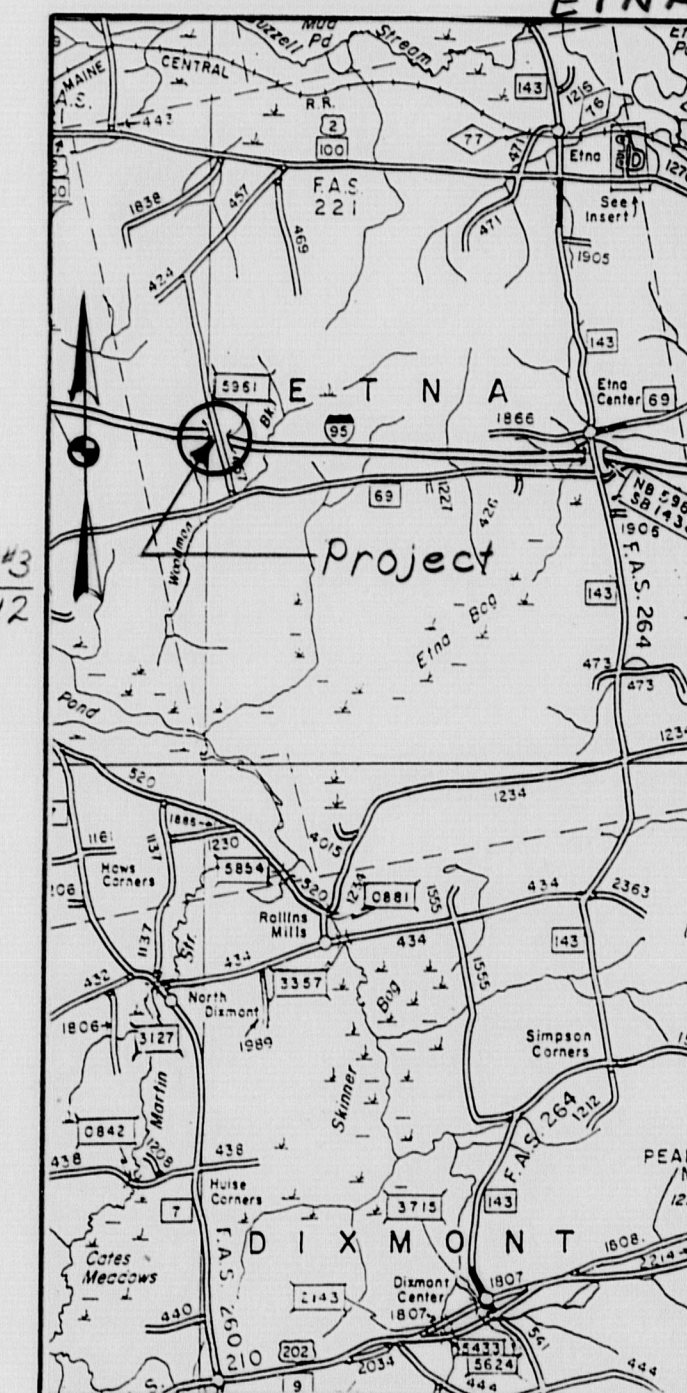
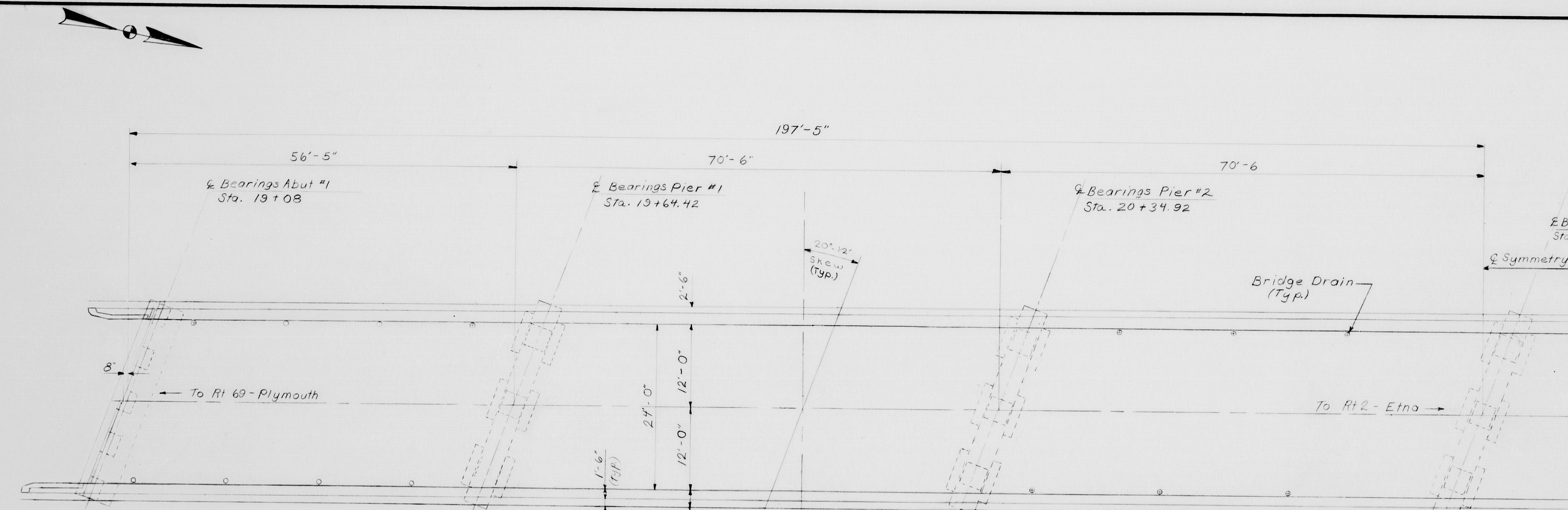


F.H.A. RES. NO.	STATE	PROJECT NUMBER	SHEET NO.	TOTAL SHEETS
1	MAINE	IM-9-5304/02	1	8
		PM: 005304 00		



LOCATION MAP



Plan

UTILITIES
C.M.P.
Hampden Telephone
West Penobscot Telephone
NYNEX

SCOPE OF WORK
Replace the existing bituminous pavement and membrane waterproofing with 3" new bituminous pavement and membrane waterproofing.
The deck will be patched as required.
The finger joints will be modified and sealed with a gland type seal.

SPECIFICATION
DESIGN: AASHTO Standard Specifications for Highway Bridges 1992 and interim specifications 1993.
CONTRACT: State of Maine, Department of Transportation, Standard Specifications Highway Bridges Revisions of Oct. 1990.

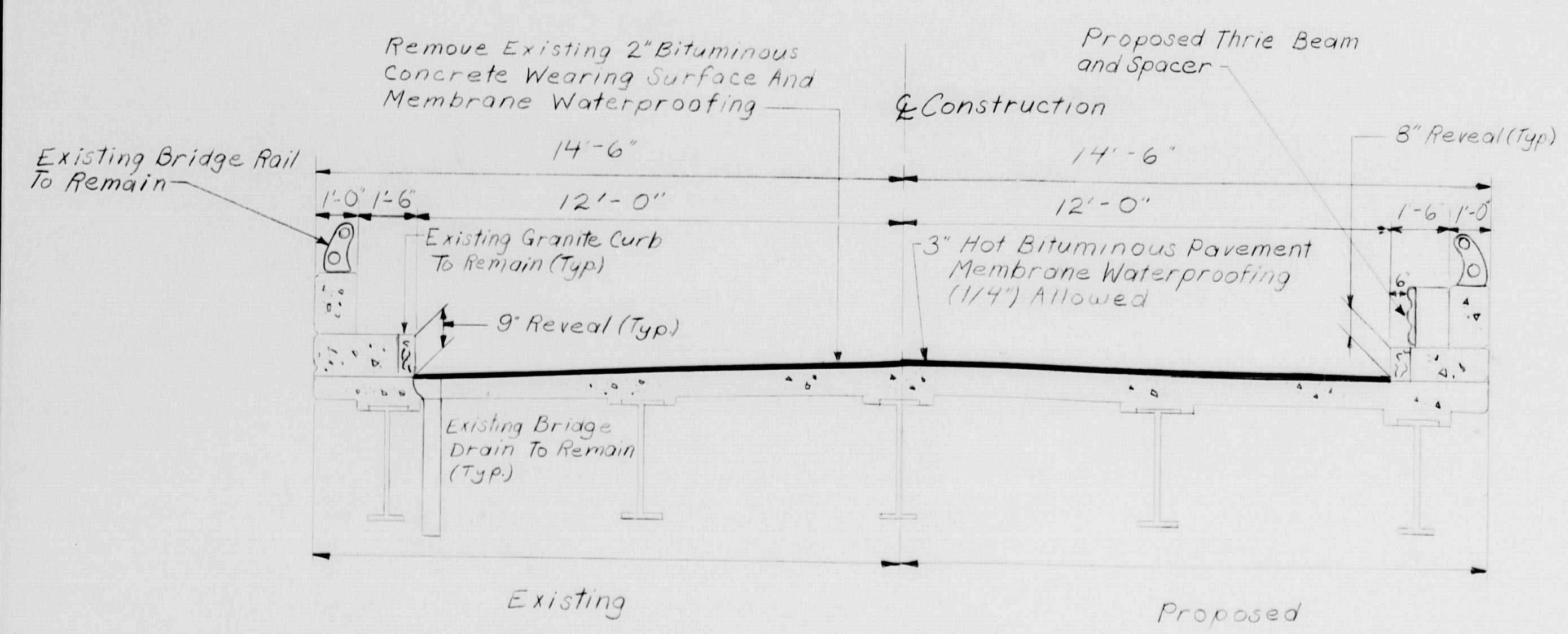
TRAFFIC DATA

AADT 1994	55
AADT 2014	80
DHV	9
Trucks (DHV) %	6
Directional %	60
18 Kip Equivalent P2.0	2

MAINTENANCE OF TRAFFIC
One way traffic shall be maintained on a 10'-0" minimum lane with traffic lights.

Taper approach pavement to match new bridge grade. Butt joint ends of taper.
Add three beam to existing bridge rail and connect to existing approach rail.
Taper proposed pavement around existing bridge drains.

DESIGN LOADING
LIVE LOAD: M20-44 (Existing)
MATERIALS
CONCRETE - Class A
REINFORCING STEEL - ASTM A615 Grade 60
STRUCTURAL STEEL - A36
BASIC ALLOWABLE STRESSES
CONCRETE - $f'_c = 4,000$ psi
REINFORCING STEEL - $f_y = 60,000$ psi
STRUCTURAL STEEL - $f_y = 36,000$ psi



Transverse Section

NOTE:
All work contemplated under this contract to be governed by and in conformity with the Standard Specifications (Revision of October 1990) and supplementals thereto, as modified on the plans and in the Special Provisions.

Plans of existing bridge are available for the Contractor's reference at the Bridge Design Office in Augusta. These are reproductions of original drawings as prepared for the construction of the bridge and it is very unlikely that the plans will show any construction field changes or any alterations which may have been made to the bridge during its life span.

Core reports and shear bond tests done for this bridge will be made available for the contractor's reference at the Bridge Design Office in Augusta. The report is based on the interpretation by the Department of Transportation, and the conclusions may not represent the actual conditions at the site.



INDEX OF SHEETS

DESCRIPTION	SHEET NO.
GENERAL PLAN	1
DETAILS	2
HD-10	3
HD-11	4
HD-12	5

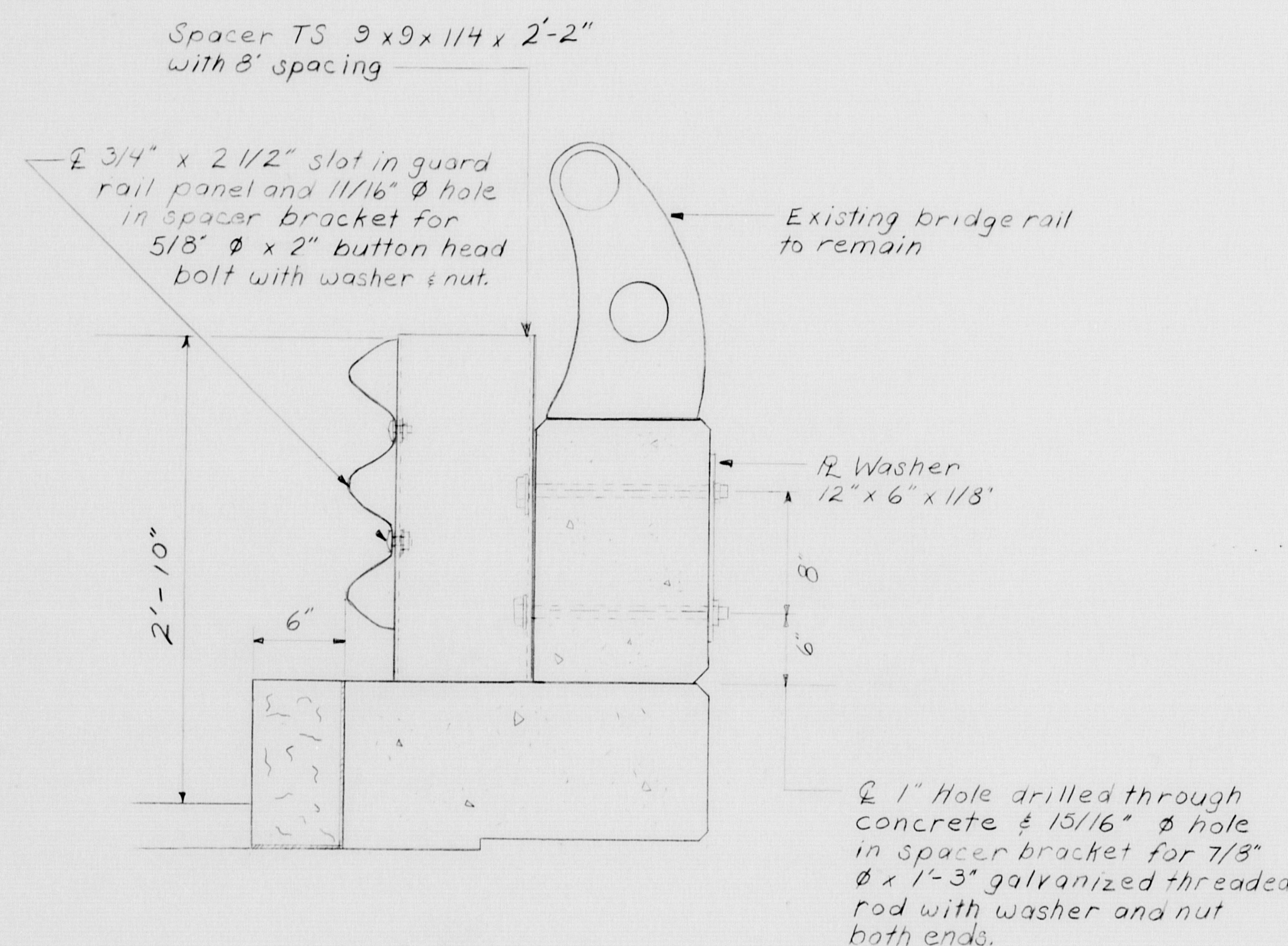
Bridge # 5961 115-162

APPROVED State of Maine Department of Transportation	United States Department of Transportation Federal Highway Administration Region 1
COMMISSIONER DATE	APPROVED DATE
CHIEF ENGINEER DATE	DIVISION ADMINISTRATOR DATE

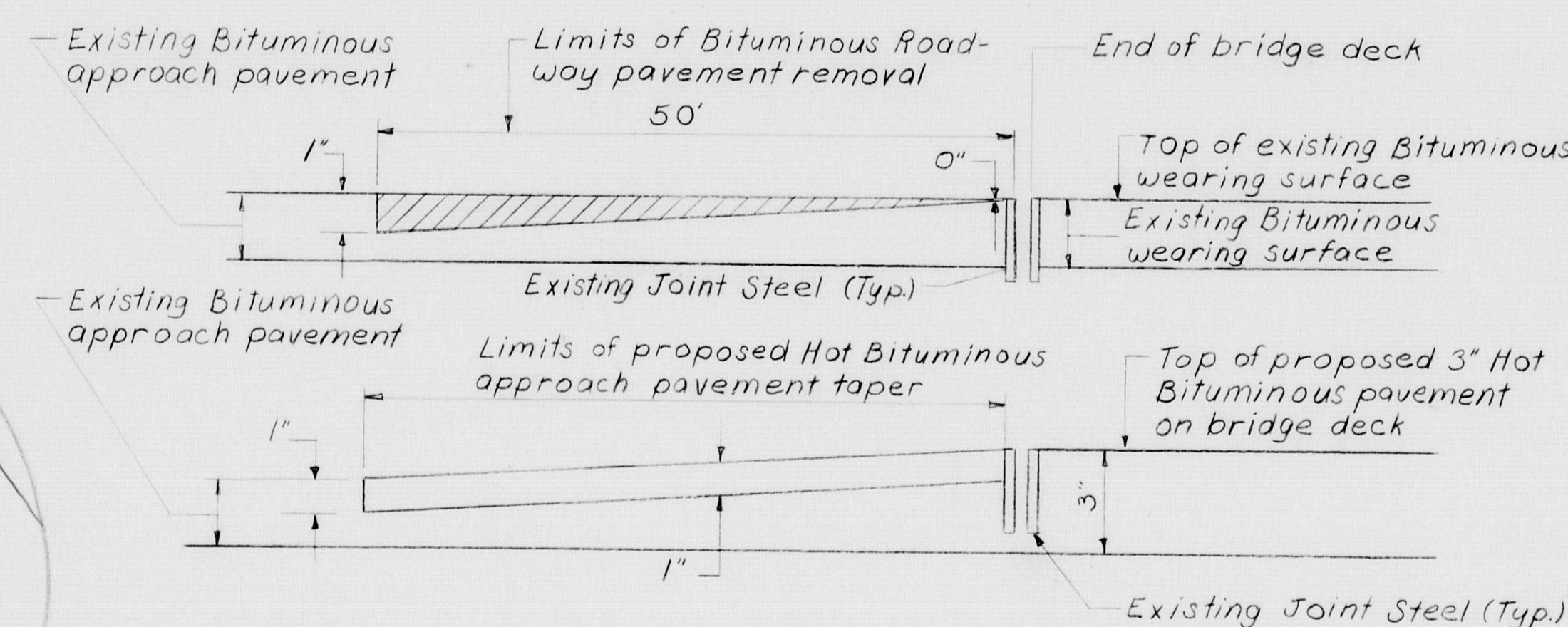
STATE OF MAINE
DEPARTMENT OF TRANSPORTATION
WEST ETNA ROAD BRIDGE
OVER
INTERSTATE HIGHWAY 95
IN THE TOWN OF
ETNA
PENOBSCOT COUNTY
GENERAL PLAN
SHEET 1 OF 6 AUGUSTA, MAINE 04/06/95

P.R.A. REV. NO.	STATE	PROJECT NUMBER	SHEET NO.	TOTAL SHEETS
1	MAINE	EM-96-5304(m)	2	8

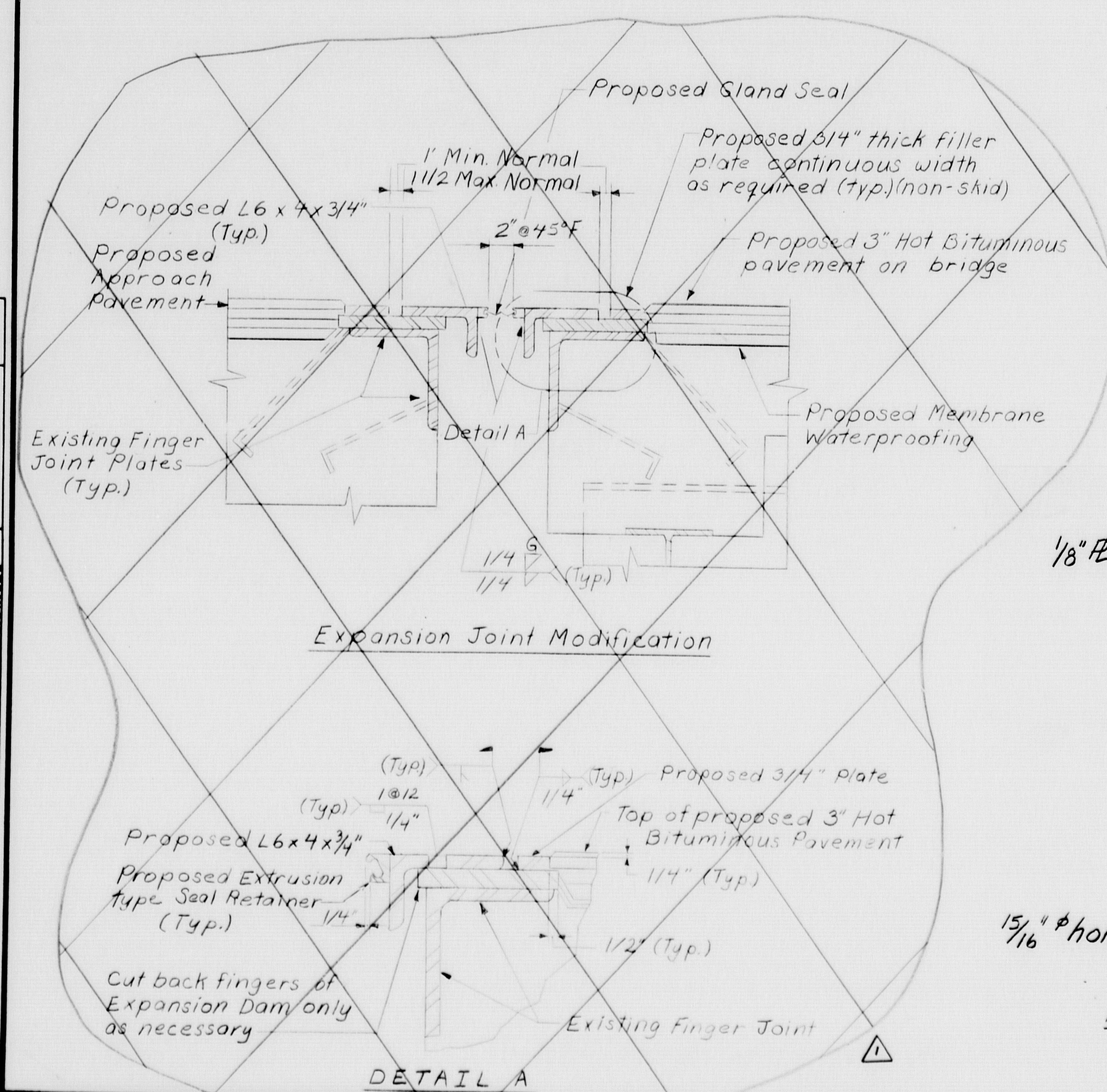
PIN 005304.00



Bridge Rail Attachment Detail



Butt Joint Detail



Expansion Joint Modification

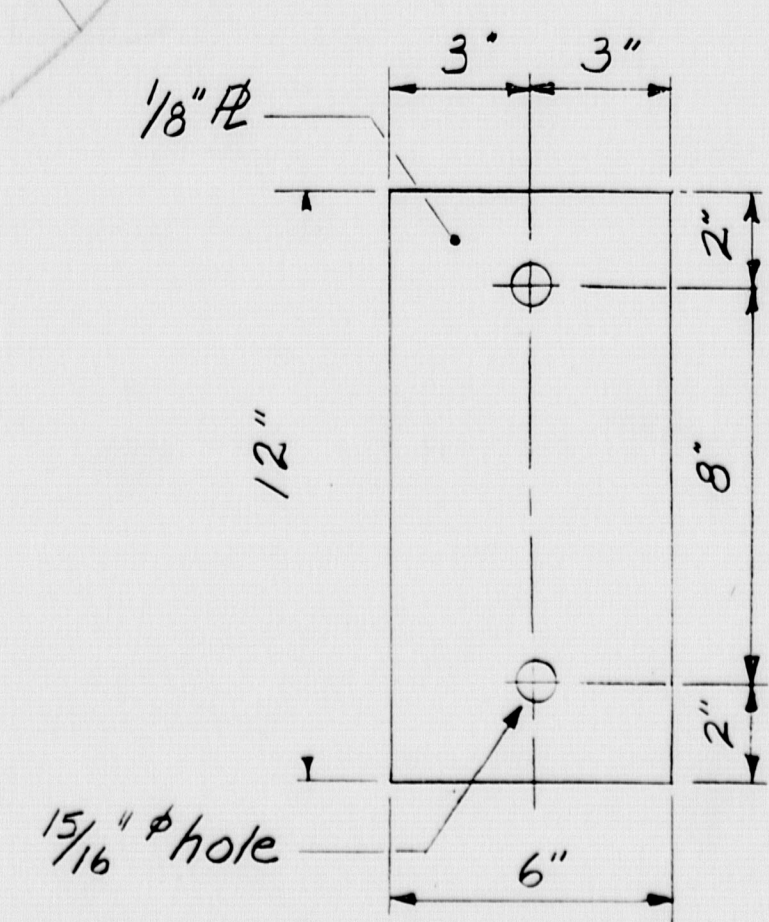
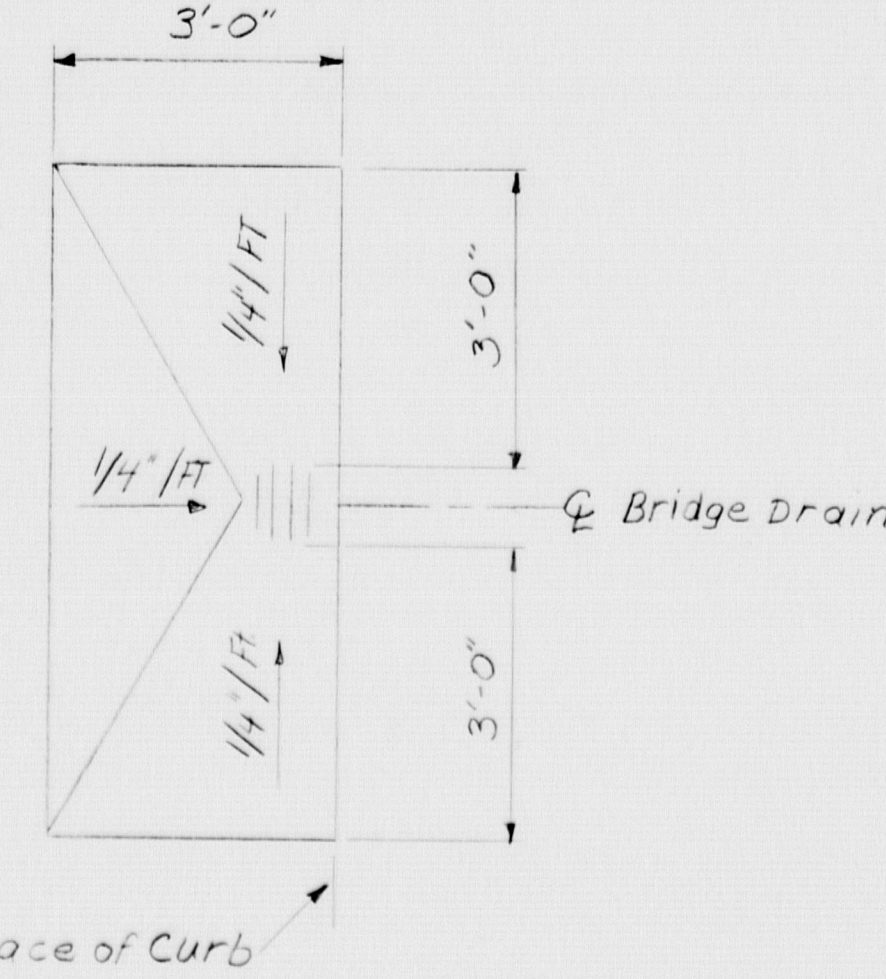


Plate Washer Detail



Pavement Taper for Bridge Drains

CONSTRUCTION NOTES

- Additional holes in the type 3 thrie beam guard rail panels may be made by drilling, punching, or other method that produces a neat clean hole of the required size. Burning of holes will not be allowed.
- Any damage to the existing concrete bridge rail resulting from drilling operations shall be repaired at the contractor's expense.
- All work and materials for attaching thrie beam to rail bracket and rail bracket to the concrete posts will be considered incidental to the thrie beam pay item.
- The temporary signal controller shall be a two-phase pre-timed controller. It shall operate as shown below:

INTERNAL HEADS	1	2	3	4	5	6	1
NORTH BOUND	G	Y	R	R	R	R	G
SOUTH BOUND	R	R	R	G	Y	R	Y
TIMING 50 SECOND DIAL	10	3	12	10	3	12	

Timing Assumes 50' Barrier Taper Each End.

G = Green
Y = Yellow
R = Red

Adjust timing as necessary in the field

ESTIMATED QUANTITIES

202.202	REMOVING PAVEMENT SURFACE	1,056	SY
202.203	PAVEMENT BUTT JOINTS	333	SY
403.10	HOT BITUMINOUS PAVEMENT, GRADING D	192	T
409.15	BITUMINOUS TACK COAT APPLIED	20	G
508.13	MEMBRANE WATERPROOFING	LUMP	LUMP
518.30	REHAB STR CONC SLAB TO REIN STL	190	SF
518.31	REHAB STR CONC SLAB BL REIN STL	48	SF
518.32	REHAB CONC SLAB FULL DEPTH	5	SF
520.244	BRIDGE JOINT MODIFICATION TYPE 4	2	EA
525.301	TEMPORARY CONC BARRIER TYPE I	LUMP	LUMP
527.32	PORTABLE CRASH BARRELS	11	EA
606.70	TRANSITION SECTION THRIE BEAM	4	EA
606.73	GR THRIE BM SINGL RL BR MT	850	LF
627.61	4" SOLID WHITE PAVE MARK LINE	1,500	LF
627.63	4" SOLID YELLOW PAVE MARK LINE	1,500	LF
627.65	WHITE OR YELL PAVE & CURB MARK	50	SF
627.67	REMOVING PAVEMENT MARKINGS	1,050	SF
627.68	TEMP 4" PNTD PAVE MARK WH OR YE	1,500	LF
639.19	FIELD OFFICE TYPE B	1	EA
643.72	TEMPORARY TRAFFIC SIGNAL	1	EA
646.301	DEMOUNTABLE REFLECTORIZED DELINEATOR, SINGLE	5	EA
652.31	TYPE I BARRICADE	10	EA
652.312	TYPE III BARRICADE	3	EA
652.33	DRUM	10	EA
652.34	CONE	20	EA
652.35	CONSTRUCTION SIGNS	280	SF
652.361	MAINT OF TRAFF CONTROL DEV	1	LUMP
652.38	FLAGGER	200	MH

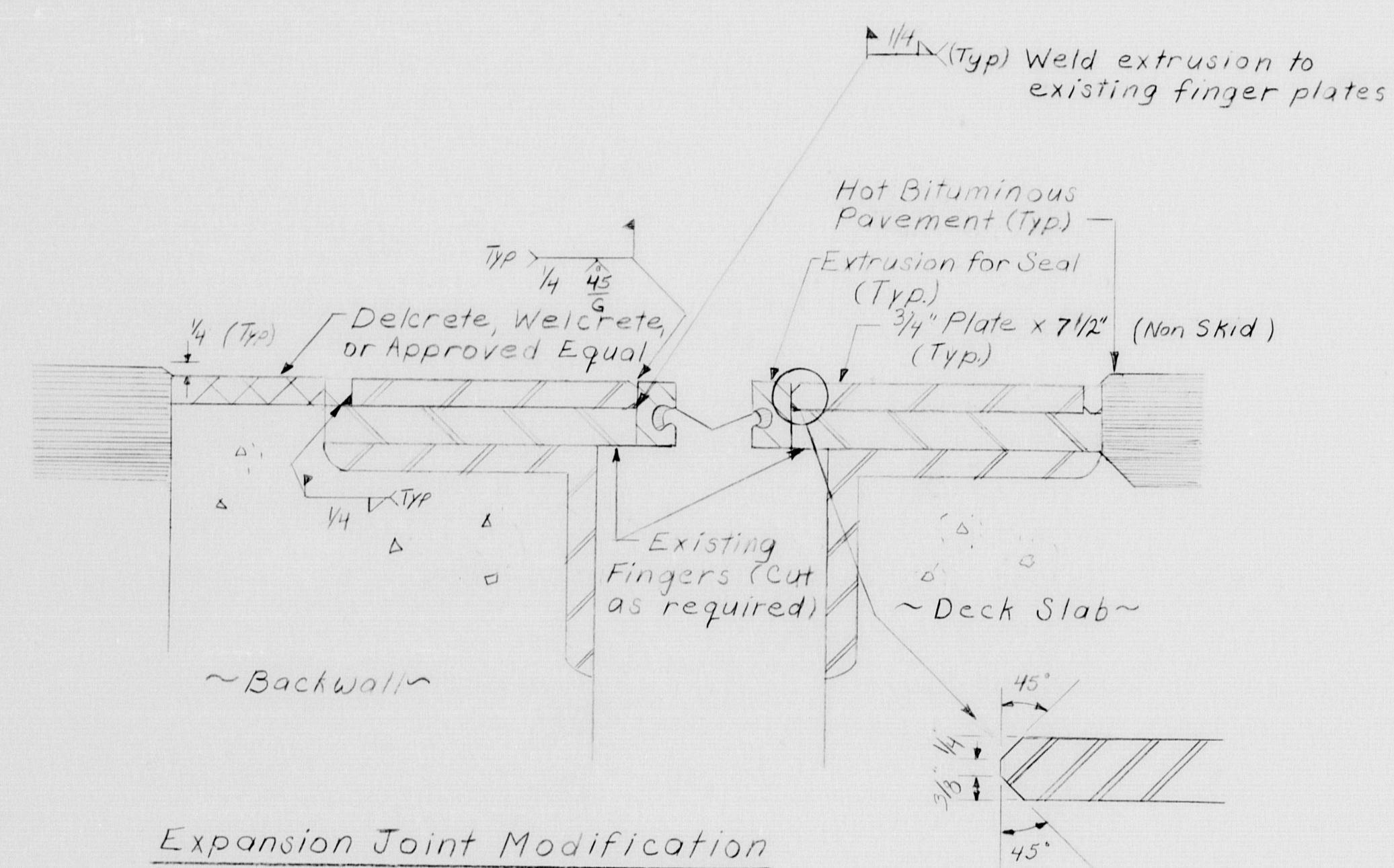
659.10	MOBILIZATION	1	LUMP
--------	--------------	---	------

115-163

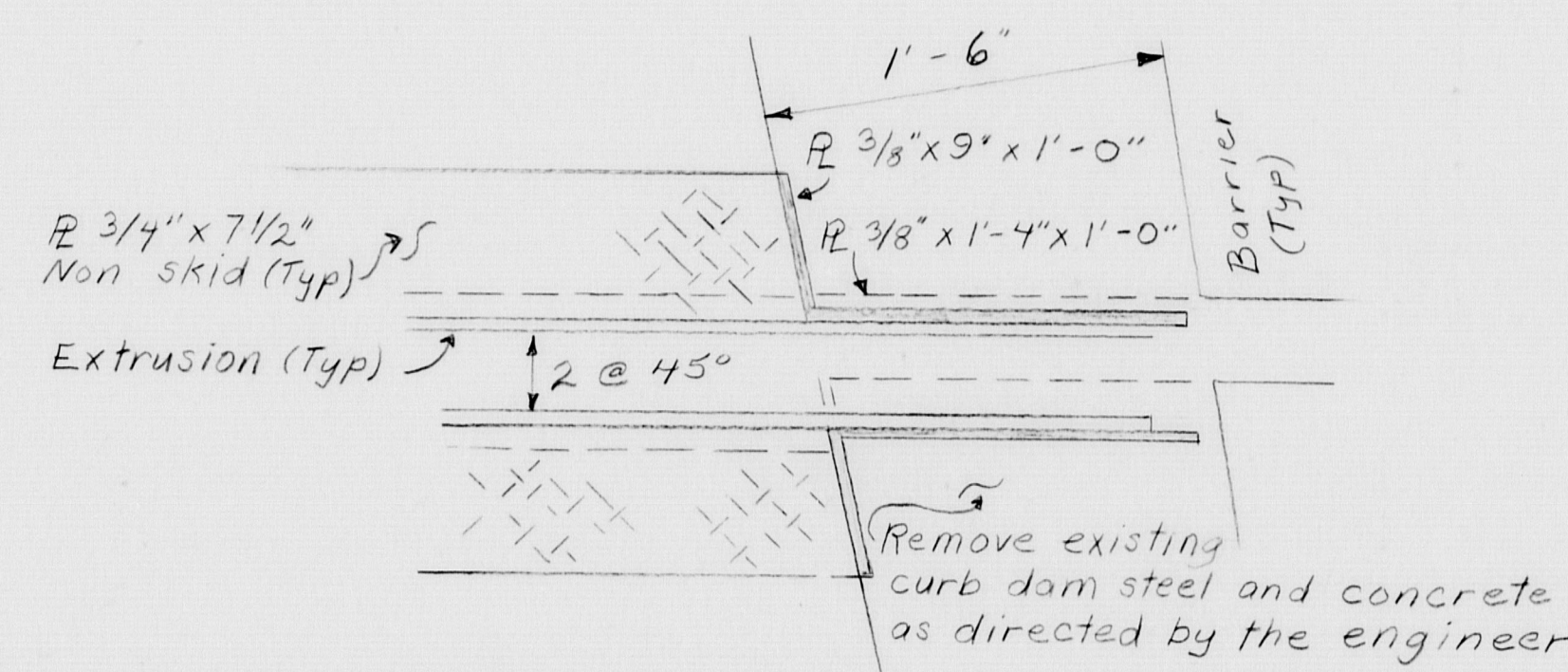
STATE OF MAINE
DEPARTMENT OF TRANSPORTATION
WEST ETNA ROAD BRIDGE
OVER
INTERSTATE HIGHWAY 95
IN THE TOWN OF
ETNA
PENOBSCOT COUNTY
BRIDGE RAIL DETAILS
SHEET 2 OF 6 AUGUSTA, MAINE 04/06/95

Remove Details
GMM 5-15-95

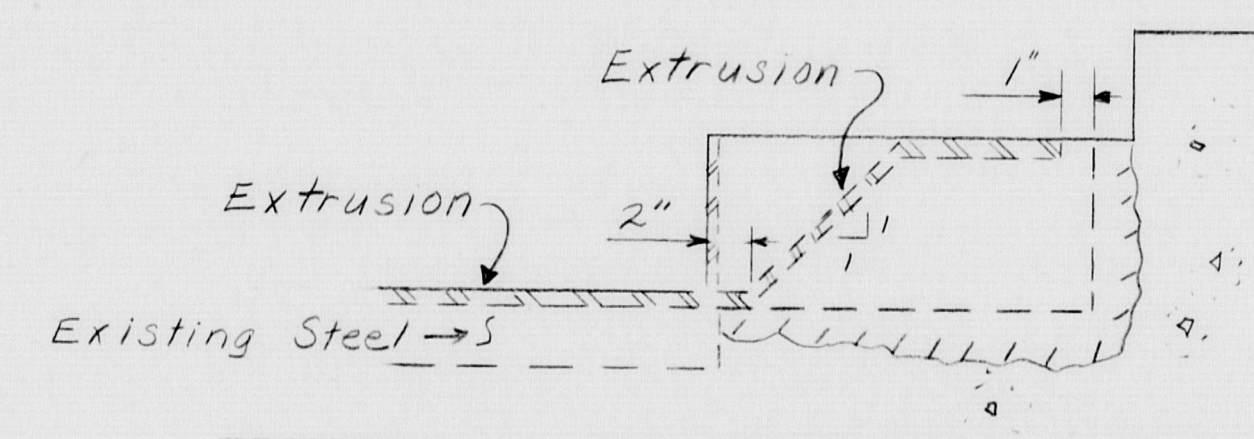
F.R.A. SHEET NO.	STATE	PROJECT NUMBER	SHEET NO.	TOTAL SHEETS
1	MAINE	17-95-9309(4)	3	8



Expansion Joint Modification



PLAN



See BD 302-93 for plate anchorage

SECTION THROUGH JOINT

PROJECT DESIGN ENGINEER	BY	DATE
DESIGN - DETAIL	BAW	5/95
CHECKED		
REVISIONS		
FIELD CHANGES		

"As Built"
1995
2046

115-164

STATE OF MAINE
DEPARTMENT OF TRANSPORTATION
WEST ETNA ROAD BRIDGE
OVER
INTERSTATE HIGHWAY 95
IN THE TOWN OF
ETNA
PENOBSCOT COUNTY
JOINT DETAILS
SHEET 2 OF 6 AUGUSTA, MAINE MAY 11, 1995